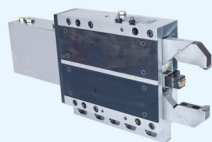


STEADY RESTS

Turning Series



Grinding Series

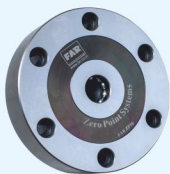


Manual Steady Rest



ZERO POINT SYSTEMS

Standard Models



Integral Models



Pneumatic Models



BAR FEEDER

Hydraulic Barfeeder



Servo Barfeeder




www.far.co.in

FENWICK AND RAVI
An ISO 9001:2015 COMPANY

#10/3, Lakshmiपुरa Main Road, Chikkabanvara P O, Abbigere, Off Jalahalli West,
Bangalore - 560090, India. Phone : 91-80-23254935, 2325 3901,
Fax: 91-80-2345 3949, Email: sales@far.co.in

www.far.co.in | www.fenwickandravi.co.in

Regional office : 

Bangalore : 9731711955 : anirudhravi@far.co.in
Chennai : 7625098717 : farsaleschennai@farglobal.in
Delhi : 7625098716 : farsalesdelhi@farglobal.in
Gujarat : 7625098712 : farsalesgujarat@farglobal.in
Pune : 7625098711 : farsalespune@farglobal.in



ANGLE HEADS



- » UNIVERSAL
 - » DUAL OUTPUT
 - » RIGHT
 - » LONG STEM
 - » FIXED
- } ANGLE HEADS

www.far.co.in
www.fenwickandravi.co.in

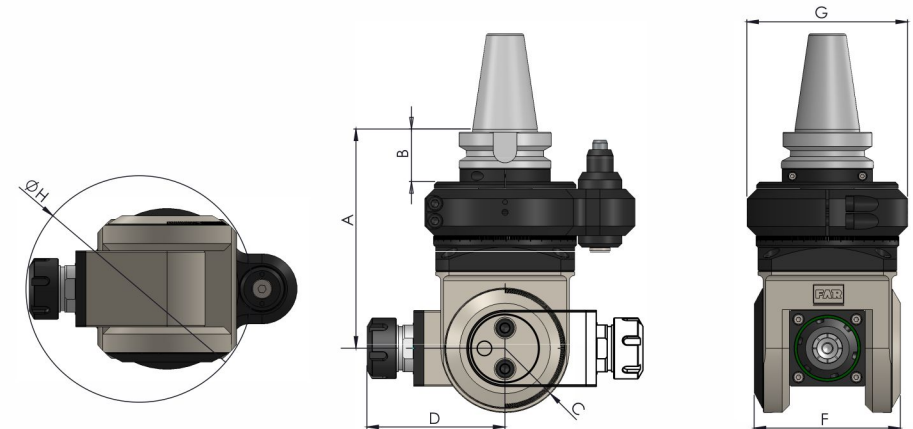
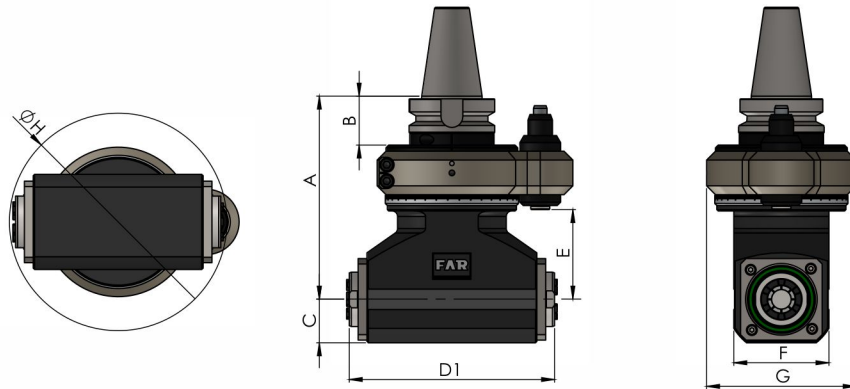
Dual Output Angle Heads

Taper	DUAL OUTPUT BT 40		DUAL OUTPUT BT 50	
Output Collet	ER16	ER25	ER25	ER32
Tool Range (mm)	3 to 10	3 to 16	3 to 16	3 to 20
GPL (mm)	150	150	160	160
Torque (Nm)	12	35	35	40
Weight (kg)	5.8	7.5	10.2	11.5
Through Coolant	Optional (extra)			
Gear Ratio	1:1			
RPM	2000-6000 (rpm)			
A (mm)	150	150	160	160
B (mm)	36	35.5	46	46
C (mm)	30	32	30	43
D (mm)	-	-	-	-
E (mm)	66	66	66	69
F (mm)	60	70	60	77
G (mm)	96	110	110	110
H (bore entry) (mm)	148	160	146	225
D1	146	155	155	217

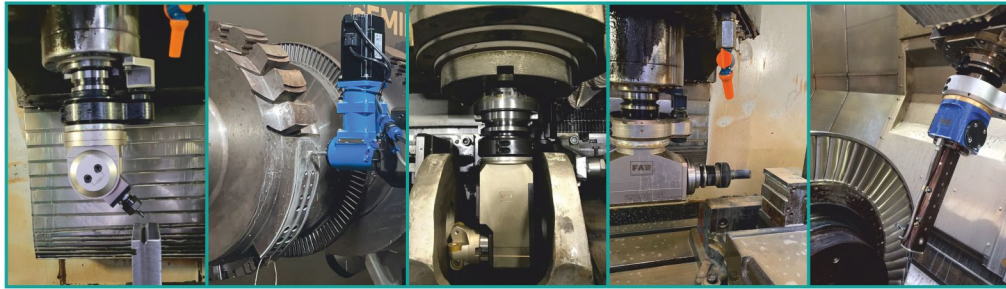
UNIVERSAL DEGREE HEAD

Taper	BT/BBT40		CAT/SK/ISO50/BBT/BT50		HSK 63/100	
Output Collet	ER16	ER25	ER25	ER40	ER25	ER32
Tool Range (mm)	3 to 10	3 to 16	3 to 16	3 to 30	3 to 16	3 to 30
GPL (mm)	140	150	160	260	160	160
Torque (Nm)	8	18	18	110	18	30
Weight (kg)	6.5	7.5	9	32.5	10.5	14
Through Coolant	Optional (extra)					
Gear Ratio	1:1 or custom ratio					
RPM	1000-6000					
A (mm)	140	150	160	260	160	160
B (mm)	Min 36	Min 36	Min 46	Min 46	Min 46	Min 46
C (mm)	36	44	44	76	44	76
D (mm)	80	95	95	120	95	120
E (mm)	-	-	-	-	-	-
F (mm)	85	100	100	180	100	180
G (mm)	96	110	110	150	110	150
H (bore entry) (mm)	128	155	155	240	155	240

Universal Angle Head

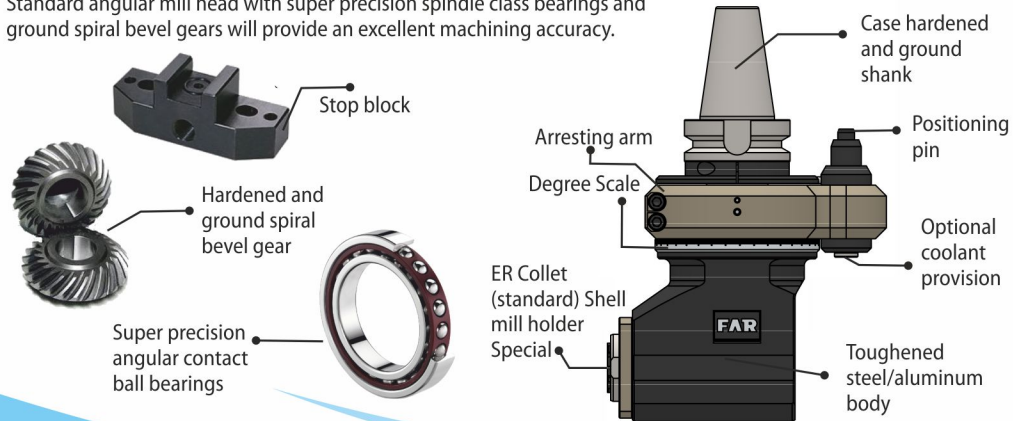


Special Right Angle Heads



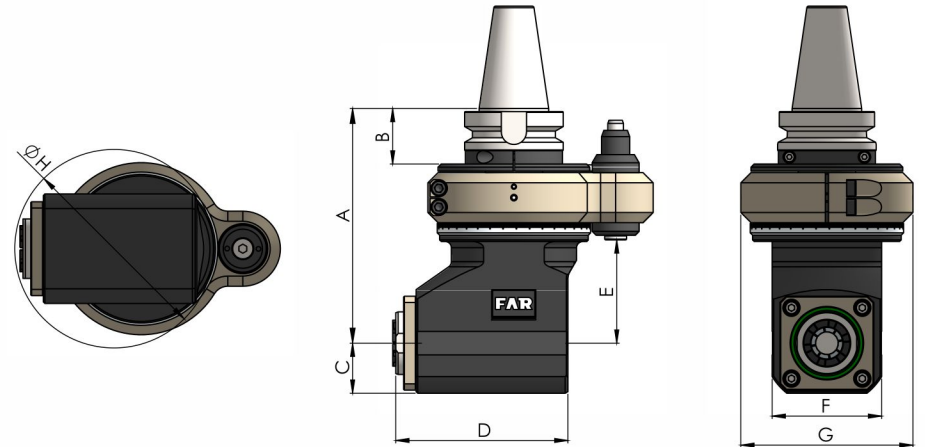
Angle head suitable for CNC machining center and SPM

Standard angular mill head with super precision spindle class bearings and ground spiral bevel gears will provide an excellent machining accuracy.



Standard Angle Head

Taper	BT/BBT30			BT/BBT40			CAT/SK/ISO50/BBT/BT50			HSK 63/100
Output Collet	ER16	Er25	ER32	ER16	ER25	ER32	ER25	Er32	ER40	Er32
Tool Range (mm)	3 to 10	3 to 16	3 to 20	3 to 10	3 to 16	3 to 20	3 to 16	3 to 20	4 to 26	3 to 20
GPL (mm)	140	140	140	150	150	150	160	160	160	156
Torque (Nm)	12	25	45	12	35	45	35	45	150	45
Weight (kg)	3.5	4	5.5	5	6	6.5	8	9	20	9
Through Coolant	Optional (extra)									
Gear Ratio	1:1									
RPM	2000-6000 (rpm)									
A (mm)	145	145	145	150	150	150	160	160	200	156
B (mm)	36	36	36	36	36	36	45.5	46	46	47
C (mm)	28	32	35	28	32	35	32	36	50	36
D (mm)	100	121	138.5	90	112	136	112	136	171	133
E (mm)	69	66	70	66	66	66	66	66	105	66
F (mm)	55	70	70	55	70	70	70	70	110	70
G (mm)	96	110	110	96	110	110	110	110	164	110
H (bore entry) (mm)	102	135	152	102	125	150	125	150	195	150
D1	-	-	-	-	-	-	-	-	-	-



Other models available on request

SPECIAL HEAD (PINION GEAR)

Taper	BT/BBT/SK/CAT/ISO-40/50/ & HSKA-63/100			
Output Collet	Er11	Er16	Er25	Er32
Tool Range (mm)	3 to 7	3 to 10	3 to 16	3 to 32
GPL (mm)	Max 350	Max 508	Max 400	Max 400
Torque (Nm)	Max 8	Max 12	Max 45	Max 60
Weight (kg)	Max 9	7 to 17	7 to 20	7 to 25
Through Coolant	Optional (extra)			
Gear Ratio	1:1 or custom ratio			
RPM	1000-6000			
A (mm)	Max 350	Max 508	Max 400	Max 400
B (mm)	30- 40	30- 40	30- 40	30- 40
C (mm)	Min 23	Min 22	Min 28	Min 35
D (mm)	Min 42	Min 50	Min 68	Min 104
E (mm)	Max 200	Max 250	Max 300	Max 300
F (mm)	Min 42.5	Min 42	Min 55	Min 75
G (mm)	Min 110	Min 110	Min 110	Min 110
H (bore entry) (mm)	Min 50	Min 60	Min 80	Min 100

SPECIAL HEAD (SINGLE SHAFT TYPE)

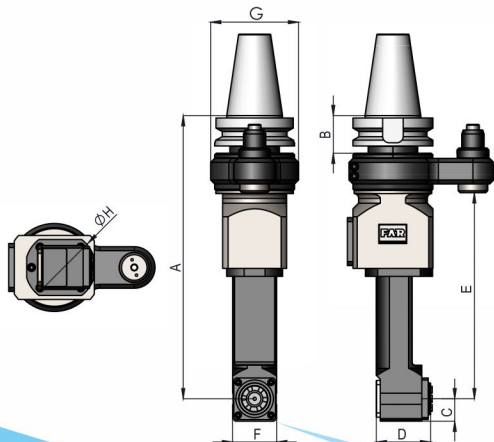
BT/BBT/SK/CAT/ISO-40/50/ and HSKA-63/100					Only BT50 & HSKA spindles				
ER16	ER25	ER32	ER40	BT40					
3 to 10	3 to 16	3 to 20	3 to 26	Upto 80					
Max 400	Max 500	Max 600	Max 600	Max 600					
Max 12	Max 45	Max 60	Max 100	Max 100					
7 to 17	7 to 20	7 to 25	19 to 35	19 to 35					
Optional (extra)									
1:1 or custom ratio									
1000-6000									
Max 400	Max 500	Max 600	Max 350	Max 350					
30- 40	30- 40	30- 40	30- 40	30- 40					
Min 26	Min 26	Min 26	Min 40	Min 40					
Min 85	Min 92	Min 105	Min 140	Min 140					
Min 120	Min 120	Min 120	Min 160	Min 160					
Min 55	Min 70	Min 85	Min 95	Min 95					
Min 96	Min 110	Min 110	Min 120	Min 120					
Min 104	Min 104	Min 104	Min 140	Min 140					

HEAVY DUTY MILLING HEAD

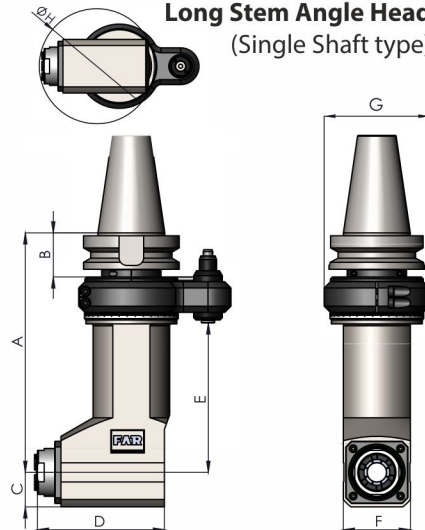
TECHNICAL SPECIFICATIONS

Output	ISO50
Input	BT50(MAS403)
Gear Ratio	1:1
Speed	2000 RPM
Torque	1000Nm
Max. Tool Size	Ø 150mm
Max. Tap Size	M36
Weight	90 Kg
GPL	252 mm

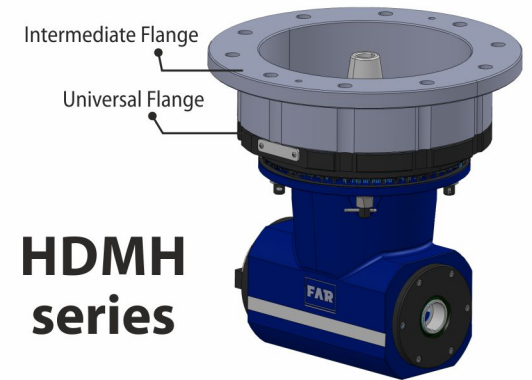
Long Stem Angle Head (Pinion Gear)



Long Stem Angle Head (Single Shaft type)



Other Models { » Manual 360 Degree Head
» Manual Fixed Angle Heads



HDMH series